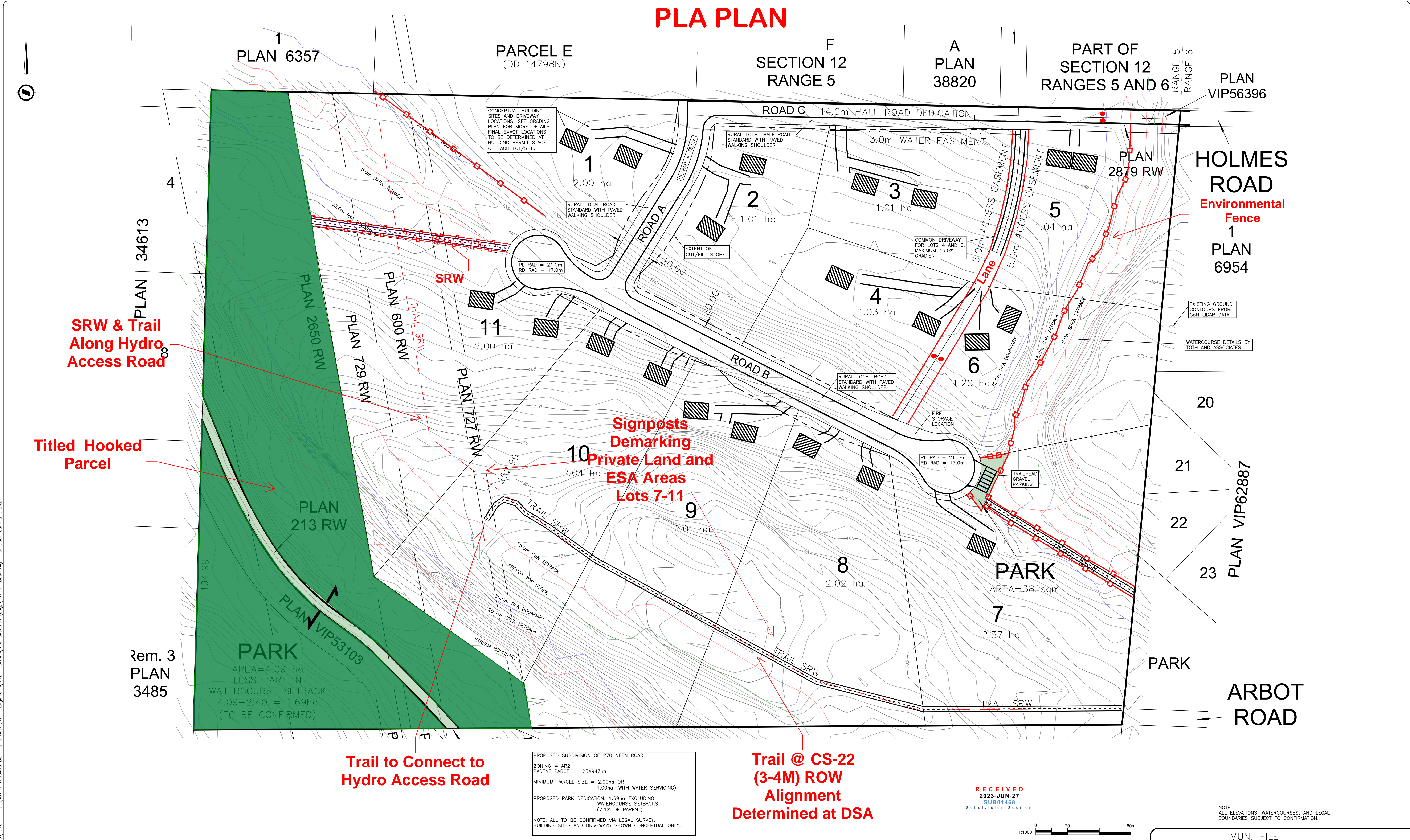


SCHEDULE A PLA PLAN

ISSUED 2023-DEC-22



PROPOSED SUBDIVISION OF 270 NEEN ROAD
 ZONING = AR2
 PARENT PARCEL = 234947ha
 MINIMUM PARCEL SIZE = 2.00ha OR
 1.00ha (WITH WATER SERVICING)
 PROPOSED PARK DEDICATION: 1.69ha EXCLUDING
 WATERCOURSE SETBACKS
 (7.1% OF PARENT)
 NOTE: ALL TO BE CONFIRMED VIA LEGAL SURVEY.
 BUILDING SITES AND DRIVEWAYS SHOWN CONCEPTUAL ONLY.

Trail @ CS-22
 (3-4M) ROW
 Alignment
 Determined at DSA

RECEIVED
 2023-JUN-27
 SUB01468
 Subdivision Section

NOTE:
 ALL ELEVATIONS, WATERCOURSES, AND LEGAL
 BOUNDARIES SUBJECT TO CONFIRMATION.

LEGAL DESCRIPTION	THE EAST 60 ACRES OF SECTION 11, RANGE 5, MOUNTAIN DISTRICT, EXCEPT PART IN PLAN 213 RW
PROJECT DATUM	ELEVATIONS ARE DERIVED FROM CoN LIDAR

ISSUED					
NO.	DESCRIPTION	2023 06 13			
1	ISSUED FOR PLA AND DPAS APPLICATIONS				

LEGEND	
LAMP STANDARD	↔ LS
POLE (Hydro, Tel.)	↔ PP
U/G WIRING	— UE —
GAS	— G —
WATER	— W —
SEWER	— S —
DRAIN	— D —
CLEANOUT	□
CATCHBASIN	■
MANHOLE	○
SERVICE RISER	●
MOUNTABLE CURB	MC
NON-MOUNT. CURB	NMC
EDGE ASPHALT	—
DITCH	—
METER	○
FLUSH VALVE	○
VALVE	○
REDUCER	○
HYDRANT	○
AIR VALVE	○

JEA J.E. ANDERSON & ASSOCIATES
 SURVEYORS - ENGINEERS
 VICTORIA NANAIMO PARKSVILLE CAMPBELL RIVER
 #1A-3411 SHENTON ROAD, NANAIMO, BC. V9T 2H1
 PHONE: 250-758-4631 EMAIL: nanaimo@jeanderson.com WEB: www.jeanderson.com

JURISDICTION	CITY OF NANAIMO	MUN. FILE	---
CLIENT	1085766 BC LTD		
PROJECT	270 NEEN ROAD CONCEPTUAL SITE PLAN		
	90190 01	C1	
ENGINEERS SEAL	MUN. DWG NUM	---	SHEET 1 OF 6